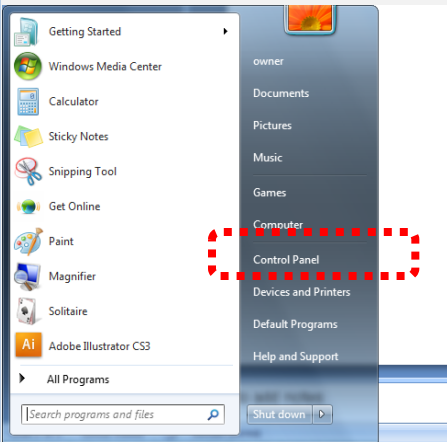


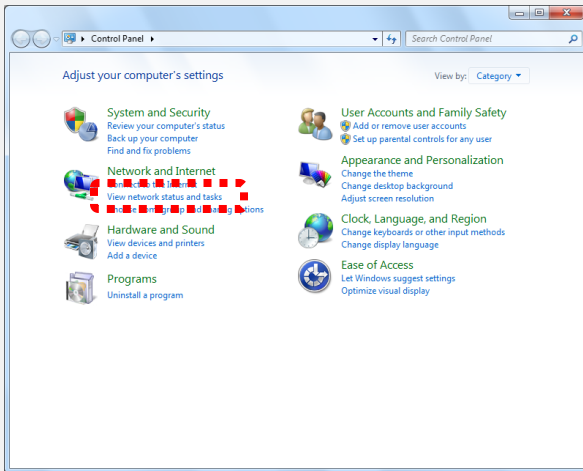
POSTECH Wireless Network Connection Setup Guide for Windows 7

1. Start → Control Panel

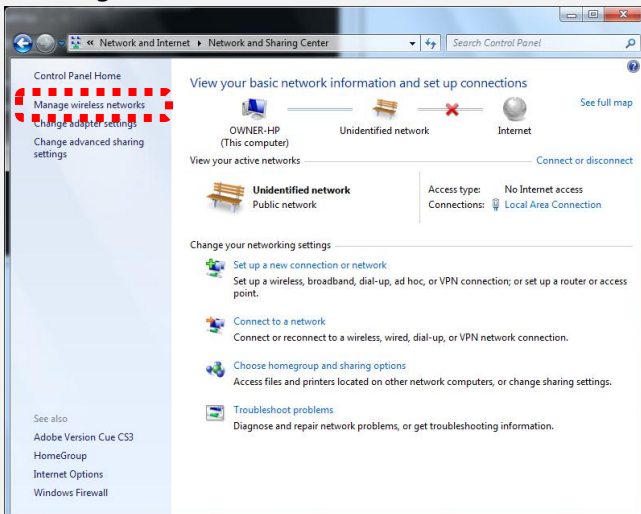


2. Network and Internet

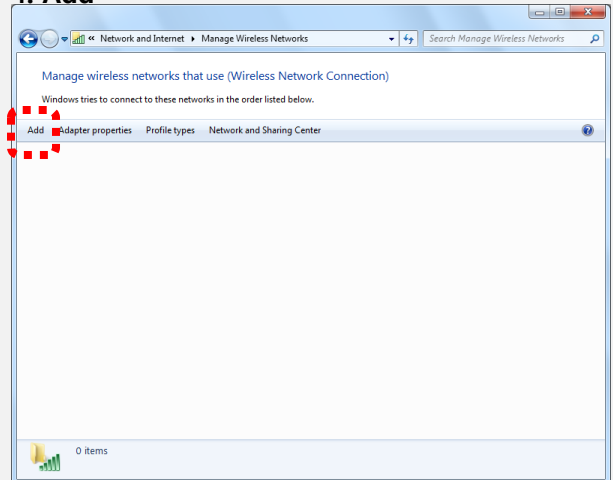
->View network status and tasks



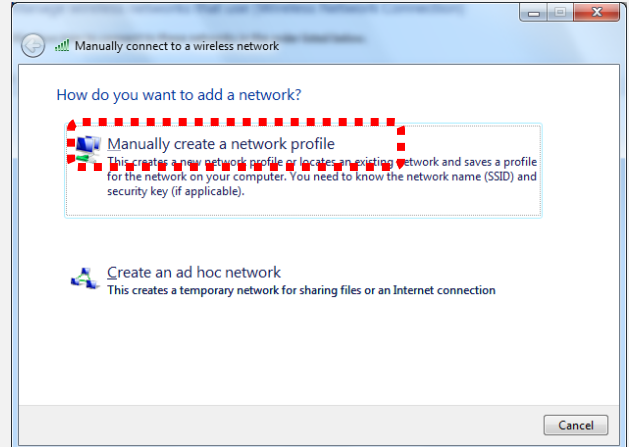
3. Manage wireless networks



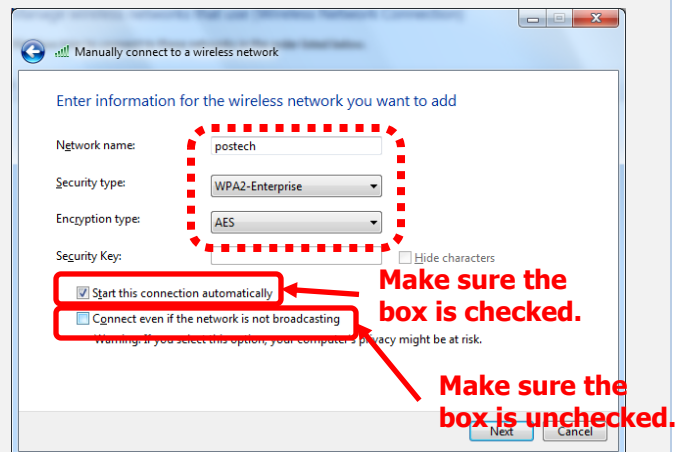
4. Add



5. Manually create a network profile



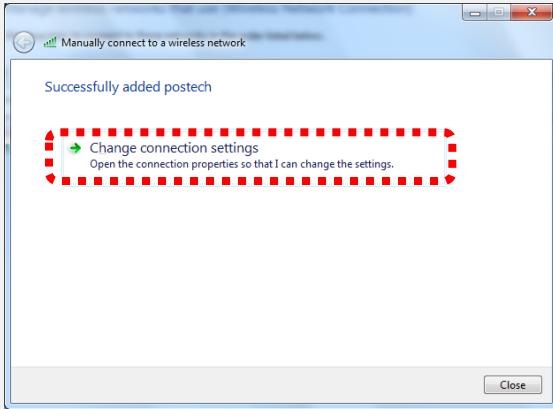
6. Enter information for the wireless network



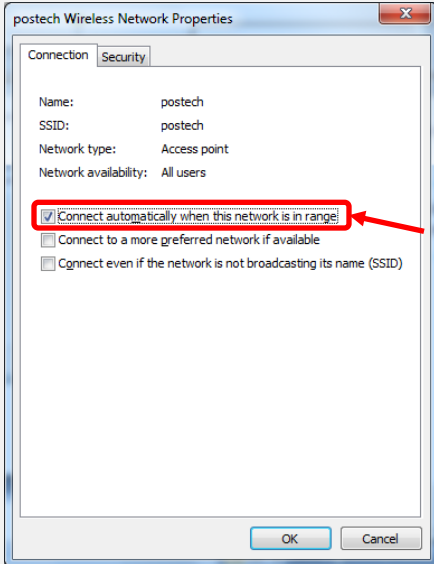
Network name : postech
Security type : WPA2-Enterprise
Encryption type : AES

POSTECH Wireless Network Connection Setup Guide for Windows 7

7. Successfully added postech -> Change connection settings

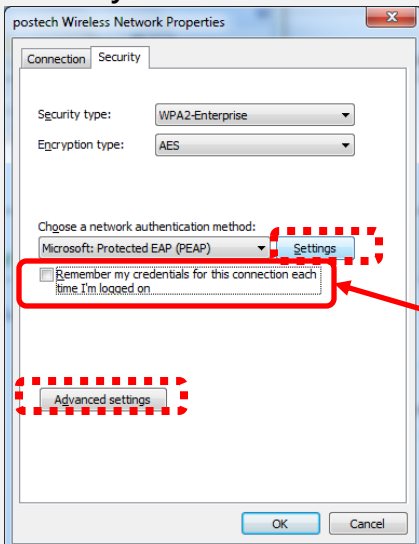


8. postech Wireless Network Properties



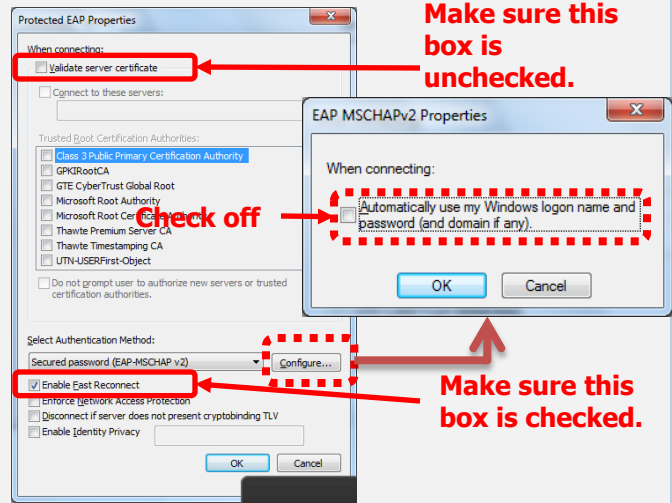
Make sure this box is checked.

9. Security tab



Make sure this box is unchecked.

9-1 Settings -> Configure

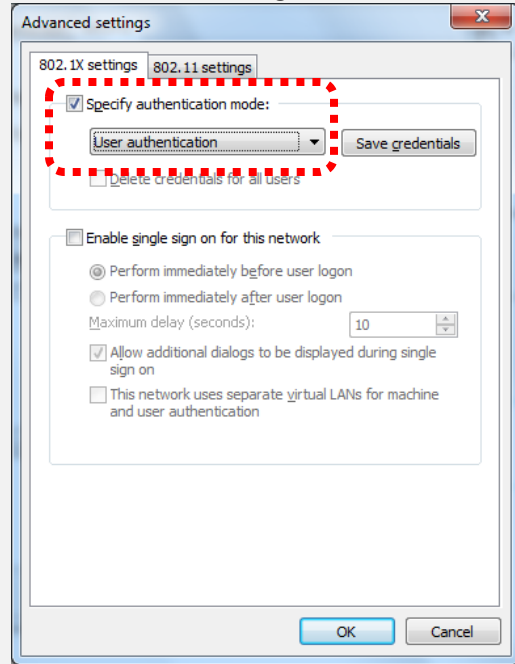


Make sure this box is unchecked.

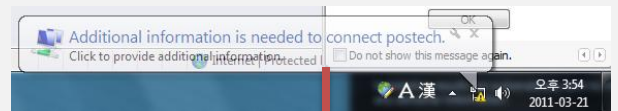
Check off

Make sure this box is checked.

9-2. Advanced settings -> User authentication



10. Network Authentication



Click

